



S.Y. Wong CEng MIEE

DN-WLAN-003
July 2003

Special points of interest:

- Enabling DHCP Server of the Wireless LAN
- Setting the Wireless PC Clients to obtain the IP and DNS servers automatically
- Verifying the IP settings

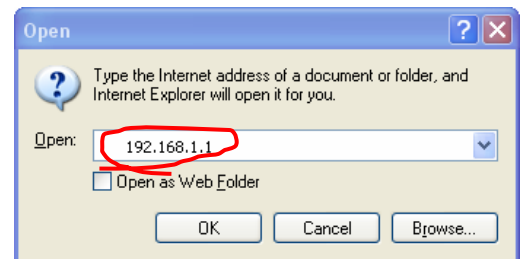
Enabling the DHCP Server of the Access Point Router

We took a comprehensive approach in our last discussion to illustrate the IP setting by disabling the DHCP at the AP Router. DHCP assigns an IP address automatically to the PC's network adaptor each time it connects to the AP Router. Here we are going to show you how to do it.

Setting DHCP for the AP Router

First, let's change the setting at the AP Router. Double click your web browser, press "Ctrl-L" together and key in the address 192.168.1.1, this is going to bring you to the "Login" of the Access Point Router. At default, skip the User name and key in "admin" at the Password box. If you have changed the Password previously, make sure that you key in your own. Hit "Enter" to get to the SETUP page.

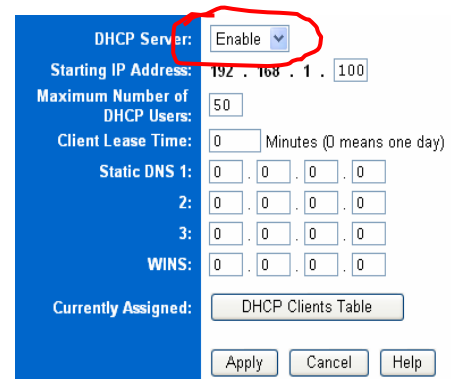
When the "SETUP" screen pops up, click on the "DHCP" button at the top bar, and select "Enable" for DHCP Server. A bunch of IP settings now appear. Leave the starting IP address as 192.168.1.100 and Number of DHCP users as 50, unless you want to have more users to clamp on the network than this. Also, leave the Client Lease Time as "0" and the Static DNS and WINS setting as 0.0.0.0, then click "Apply".



STEP 1 - To access the system administrator of the AP Router, open your Internet Explorer, press "Control-L" keys together and key in "192.168.1.1", then press OK



STEP 2 - When this screen pops up, skip the User name, enter your Password (default as "admin"), then press OK



STEP 3 - Enable the "DHCP server", then click "Apply"

Setting the Wireless PC Client

Having enabled the DHCP server at the AP Router, you'll need to remove the IP setting at the wireless network adaptor for each of your wireless PC client.



The Wireless Monitor icon appears at the right-hand bottom after installation

Boot up your PC and open the Wireless Monitor. You will find the icon at the right hand bottom of the Windows bar, or at Start-> Programs-> Wireless Network.

When the SparkLAN Wireless Monitor pops up, click on "Profile Setting" and double click the Profile Name that is currently connected to your wireless network. In this example, "mary-home" is the Profile Name of the wireless client connected to the wireless network "myhome-g". Double click "mary-home", skip the next couple of screens until you've reached "IP Setting". Keep the "IP Setting" as Enabled, then click "Next". Enable the "DHCP Status" and click "Complete".

Repeat this process for the rest of your wireless PC clients.

Verify the IP Setting of your Wireless PC Client

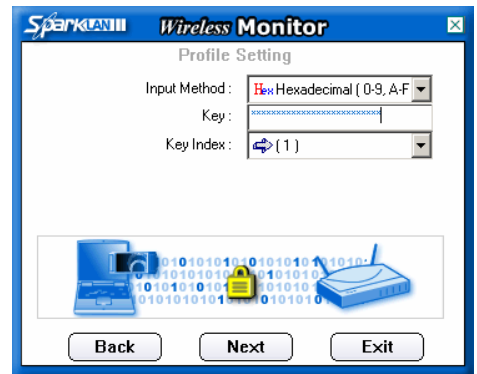


The Wireless Monitor icon appears at the right-hand bottom after installation

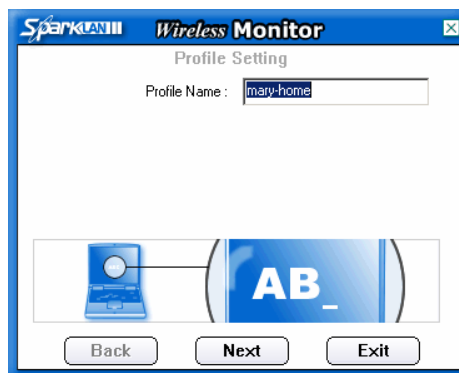
Locate the Wireless Network Connection icon at the right hand bottom of your screen, and click on it. When the "Wireless Network Connection



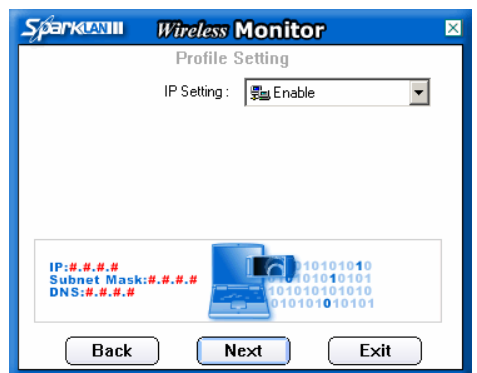
STEP 4 - Now, double click the "mary-home" profile



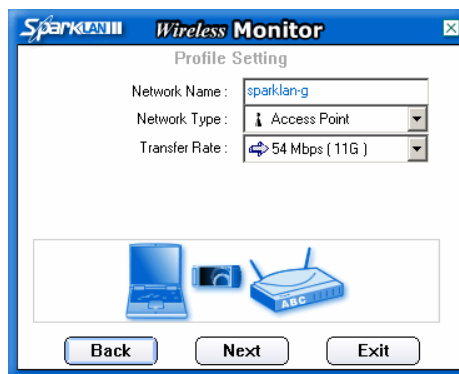
STEP 8 - Click "Next" to skip



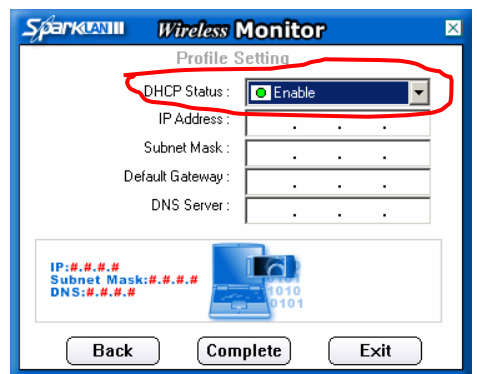
STEP 5 - Click "Next" to skip



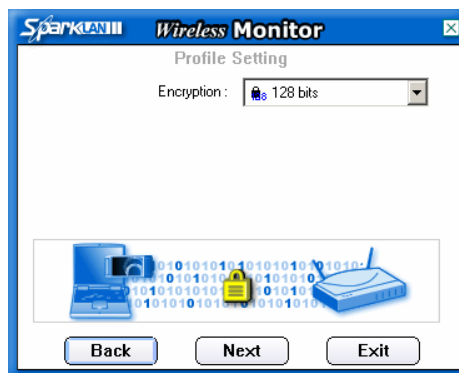
STEP 9- Enable the "IP Setting", then click "Next"



STEP 6 - Click "Next" to skip



STEP 10- Enable the "DHCP Status", then click "Complete".



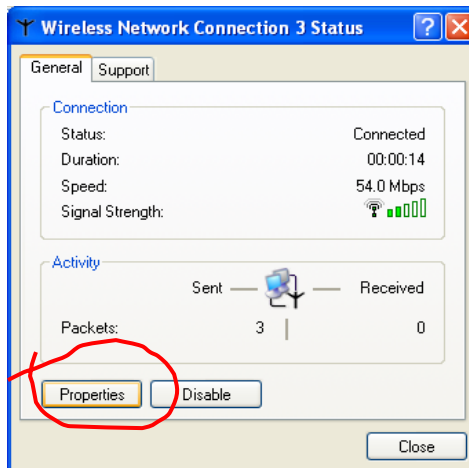
STEP 7 - Click "Next" to skip

Status" screen pops up, click on "Properties", as shown on the diagram on next page.

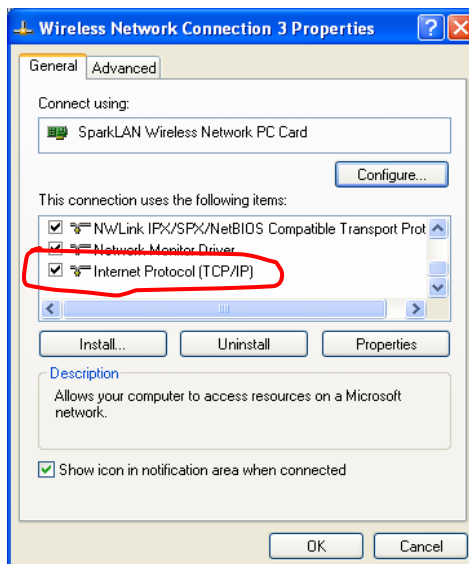
This brings you to the "Wireless Network Connection Properties" screen. Now scroll down to the "Internet Protocol (TCP/IP)" selection and double click on it. When the "Internet Protocol (TCP/IP) Properties" screen appears, select "Obtain an IP address

automatically” and “Obtain DNS server address automatically”, then click “OK”.

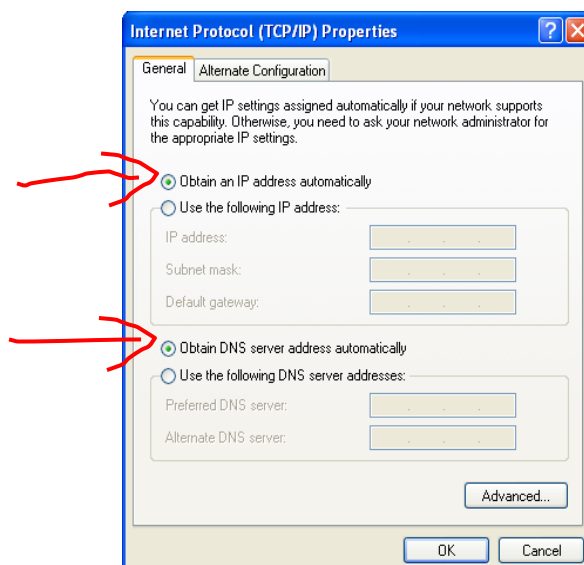
You should now be able to browse a couple of popular web sites. If not, check if your wireless network adaptor has been accidentally disabled, go back to the previous steps and reboot your PC. **d**



STEP 11 - Double click “Properties”



STEP 12 - double click “Internet Protocol (TCP/IP)”, then click “Next”



STEP 13 - Select “Obtain IP and DNS addresses automatically”, then click “OK”

danets

S.Y. Wong CEng MIEE

DataCom Network Ltd.
1505 Ricky Centre
Kwun Tong
Hong Kong

Phone: +852 2951 0321
Fax: +852 3141 9209
Email: marcom@danets.com



We are on the web!

Please visit www.danets.com

In today's environment, it's all about getting back to the basics. We focus on our core competence to improve the fundamentals of personal mobile communications - unwiring the mobile terminals using "Carrier Class" technologies with fun and productivity.

We differentiate our products and services with competitive quality and price performance, plus a deep understanding of the RF (wireless) and networking technologies in our planning and installation service offerings. How do we do that? We work directly with the manufacturers to obviate gaps in our supply chain, gain the economy of scale so that we can get you the cost benefits and the after-sales services.

For further information, please call +852 2951 0321 or email: marcom@danets.com

The registered trademarks belong to the respective companies.

Specifications are subject to change without notice.

Enabling the DHCP Server of the Access Point Router

Special points of interest:

- Enabling DHCP Server of the Wireless LAN
- Setting the Wireless PC Clients to obtain the IP and DNS servers automatically
- Verifying the IP settings

