



S.Y. Wong CEng MIEE



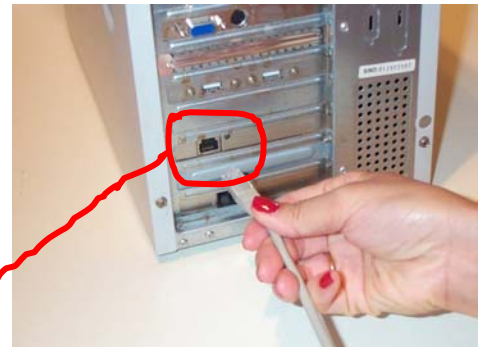
DN-WLAN-007  
July 2003

## iCable Wireless Broadband Setup Quick Reference

### Special points of interest

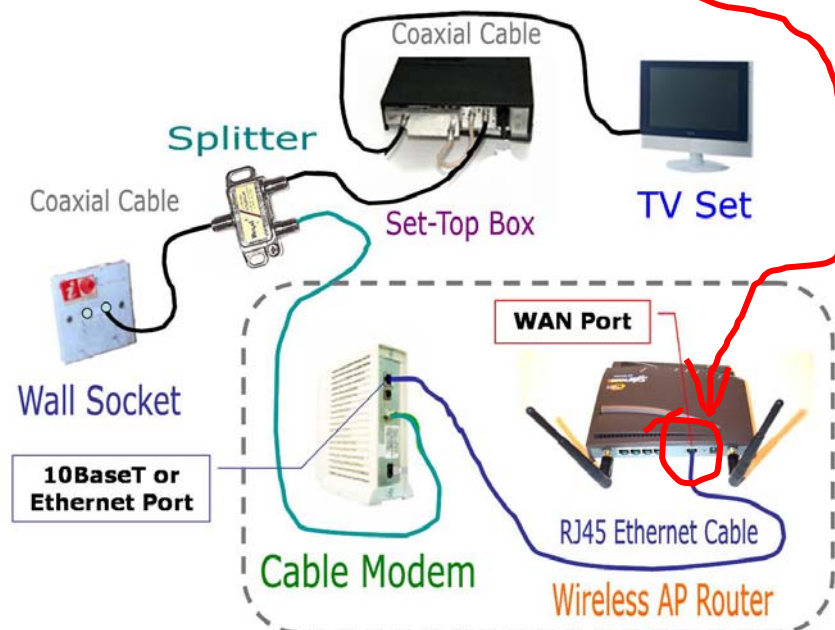
- Showing you the physical cable connection of the wireless AP Router and Cable Modem.
- Setting the wireless AP Router as the “Automatic Configuration—DHCP”.
- Matching the MAC Address.
- Verifying the broadband connection.

iCable offers both Motorola and Terayon cable modems. No matter what you've got, there are two main ports on the modem you should find—the 10Base-T Ethernet Port that connects to your PC and the COAX Port that go to the wall socket via the Splitter. To extend your wired LAN to wireless, you will simply disconnect the Ethernet cable from your PC



**STEP 1** - Unplug the RJ45 Ethernet Cable that runs from iCable's Cable Modem

### Connecting the Cable Modem to Wireless AP Router



**STEP 2** - Plug it straight into the WAN Port of the wireless AP Router., as shown in the dotted-line box.

and plug it straight into the WAN port of the wireless AP Router. Reset the power supplies of the Cable Modem and AP Router.

### Setting the Wireless AP Router with Dynamic IP Address

If you haven't set up your wireless PC client, we suggest you to work on it with the installation guide of "Building your 11/54Mbps High-Speed Home/ Office wireless network with a step-by-step approach" (Ref: DN-WLAN-02). You can find it at [Http://www.danets.com/application\\_e.htm](http://www.danets.com/application_e.htm).

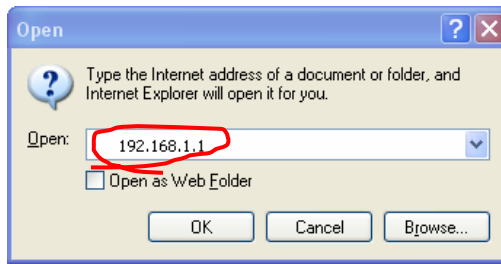
Once your wireless PC client is up and running, double click your web browser, press "Ctrl-L" together and key in the address 192.168.1.1, this is going to bring you to the "Login" of the Access Point Router. At default, skip the User name and key in "admin" at the Password box. If you have changed the Password previously, make sure that you key in your own. Hit "Enter" to get to the SETUP page.

When the SETUP page pops up, choose "Automatic Configuration—DHCP" as the Connection Type. Leave the Host Name and Domain Home as blank unless you know exactly what to enter. Click "Apply" then "Continue".

### Matching the MAC Address to your Wireless AP Router

iCable might have memorized the MAC address of your PC LAN card the first time you connected to it. To reset the MAC address, you will either need to RE-SET your cable modem, or to configure the wireless AP Router with your PC LAN card's MAC address.

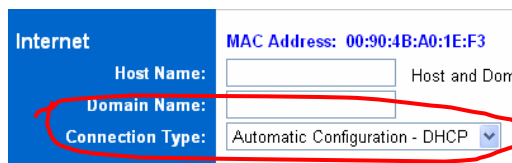
How do you know the MAC address of your PC LAN Card? For Windows 2K and XP, go to Start -> Run and key in "cmd", then click "OK". At DOS prompt, type



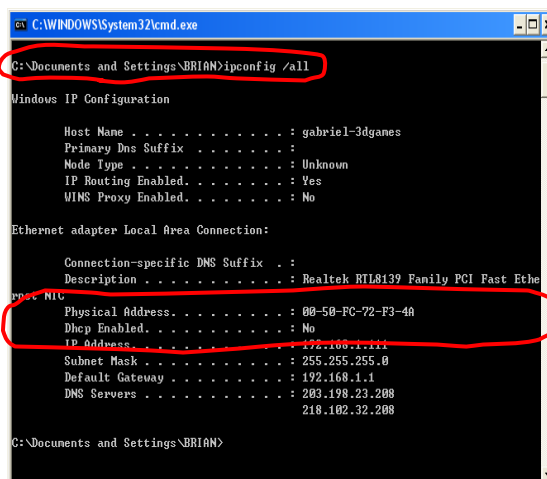
**STEP 3** - To access the system administrator of the AP Router, open your Internet Explorer, press "Control-L" keys together and key in "192.168.1.1", then press OK



**STEP 4** - When this screen pops up, skip the User name, enter your Password (default as "admin"), then press OK



**STEP 5** - Now, choose "Automatic Configuration—DHCP" as the Connection Type, then click "Apply"




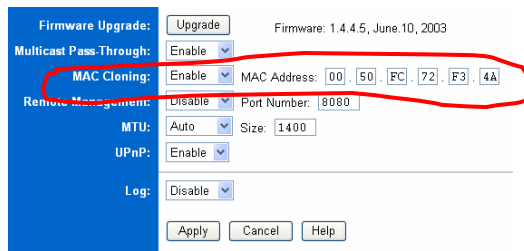
**STEP 6** - For Windows 2K and XP Only. Otherwise, go to Step 8. Type "ipconfig /all" at DOS prompt, and it shows the Physical address (i.e. MAC address) as 00:50:FC:72:F3:4A.

*Choose "Automatic Configuration—DHCP" as the Connection Type. Leave the Host Name and Domain Home as blank unless you know exactly what to enter.*

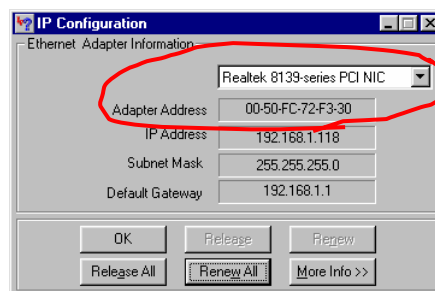
“ipconfig /all” and hit the “ENTER” key to show the “Ethernet Adaptor Local Area Connection”. If you have more than one Ethernet Network Adaptor cards installed in your PC, make sure you scroll down to show the right one. In our example, the LAN card we used to connect to iCable is a Realtek RTL8139 Family PCI Fast Ethernet Adaptor Card with a Physical Address (i.e. the MAC address) of 00:50:FC:72:F3:4A. At the SYSTEM page of the AP Router, key in this MAC address at MAC Cloning, then click “Apply”. See Step 6 and 7 for details.

For Windows 98 or ME, the way to get the MAC address is slightly different. Go to Start -> Run and key in “winipcfg”, then click “OK”. An IP Configuration screen pops up showing the Ethernet Adaptor Information. Pick the Ethernet Adaptor that you’ve been connecting to iCable. In our example, the LAN card is Realtek 8139-series PCI NIC with an Adaptor Address (i.e. the MAC address) of 00:50:FC:72:F3:30. At the SYSTEM page of the AP Router, key in this MAC address at MAC Cloning, then click “Apply”. See Step 8 and 9 for details.

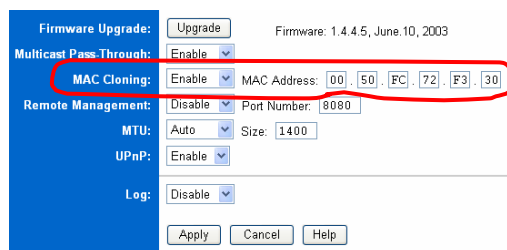
At the STATUS page, you will be able to see “Connected” with the IP and DNS addresses assigned by your office or campus LAN. Otherwise, check the cables and MAC address carefully before making the reconnection 



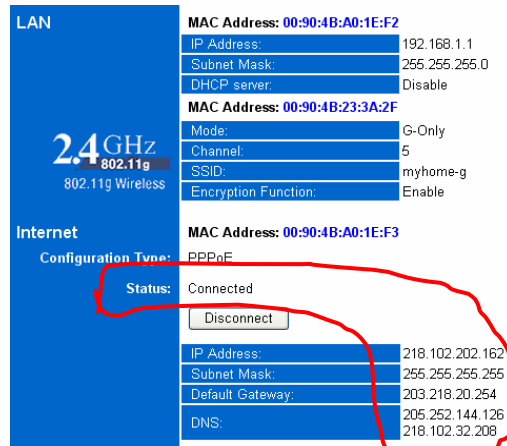
**STEP 7** - At the “SYSTEM” screen of the AP Router. Key in the MAC address, then click “Apply”



**STEP 8** - Go to Start -> Run. Key in “winipcfg”, and choose the PC LAN adaptor that used to connect to iCable. In this example, the Adaptor Address (i.e. MAC address) is 00:50:FC:72:F3:30



**STEP 9** - At the “SYSTEM” screen of the AP Router. Key in the MAC address, then click “Apply”



**STEP 10** - The “Status” screen refreshes every six seconds. It shows a bunch of IP and DNS addresses if the AP router is connected to iCable.

*iCable might have memorized the MAC address of your PC LAN card the first time you connected to it. To reset the MAC address, you will either need to RE-SET your cable modem, or to configure the wireless AP Router with your PC LAN card’s MAC address.*

# danets

*S.Y. Wong CEng MIEE*

---

DataCom Network Ltd.  
1505 Ricky Centre  
Kwun Tong  
Hong Kong

Phone: +852 2951 0321  
Fax: +852 3141 9209  
Email: marcom@danets.com



---

We are on the web!

Please visit [www.danets.com](http://www.danets.com)

---

In today's environment, it's all about getting back to the basics. We focus on our core competence to improve the fundamentals of personal mobile communications - unwiring the mobile terminals using "Carrier Class" technologies with fun and productivity.

We differentiate our products and services with competitive quality and price performance, plus a deep understanding of the RF (wireless) and networking technologies in our planning and installation service offerings. How do we do that? We work directly with the manufacturers to obviate gaps in our supply chain, gain the economy of scale so that we can get you the cost benefits and the after-sales services.

For further information, please call +852 2951 0321 or email: [marcom@danets.com](mailto:marcom@danets.com)

The registered trademarks belong to the respective companies.

Specifications are subject to change without notice.

---

## iCable Wireless Broadband Setup Quick Reference



### Special points of interest

- Showing you the physical cable connection of the wireless AP Router and Cable Modem.
- Setting the wireless AP Router as the "Automatic Configuration—DHCP".
- Matching the MAC Address.
- Verifying the broadband connection.

