



S.Y. Wong CEng MIEE



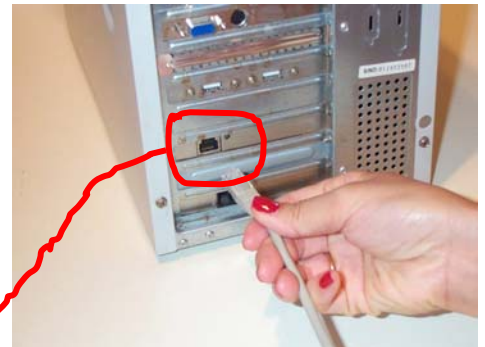
DN-WLAN-008  
July 2003

### Special points of interest

- Showing you the physical cable connection of the wireless AP Router and HGC ADSL/VDSL Modem.
- Setting the wireless AP Router for either the “Automatic Configuration—DHCP” or “Static IP” according to your HGC subscription.
- Verifying the broadband connection.

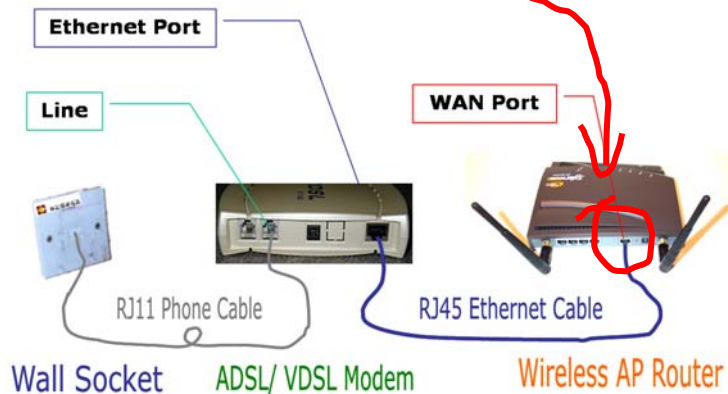
## HGC Wireless Broadband Setup Quick Reference

HGC offers both ADSL and VDSL modems. No matter what you’ve got, there are two main ports on the modem you should find—the Ethernet Port that connects to your PC and the Line Port that go to the wall socket. To extend your wired LAN to wireless, you will simply disconnect the Ethernet cable from your PC and plug it straight into the WAN port of



**STEP 1** - Unplug the RJ45 Ethernet Cable that runs from the office or HGC’s ADSL or VDSL Modem

### Connecting the ADSL/ VDSL Modem to the Wireless AP Router



**STEP 2** - Plug it straight into the WAN Port of the wireless AP Router.

the wireless AP Router. Reset the power supplies of the Modem and AP Router.

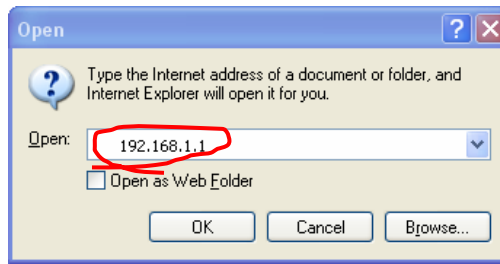
### Setting the Wireless AP Router with Dynamic IP Address

If you haven’t set up your wireless PC client, we suggest you to work on it with

the installation guide of “Building your 11/54Mbps High-Speed Home/ Office wireless network with a step-by-step approach” (Ref: DN-WLAN-02). You can find it at [Http://www.danets.com/application\\_e.htm](http://www.danets.com/application_e.htm).

Once your wireless PC client is up and

running, double click your web browser, press “Ctrl-L” together and key in the address 192.168.1.1, this is going to bring you to the “Login” of the Access Point Router. At default, skip the User-name and key in “admin” at the Password box. If you have changed the Password previously, make sure that you key in your own. Hit “Enter” to get to the SETUP page.



**STEP 3** - To access the system administrator of the AP Router, open your Internet Explorer, press “Control-L” keys together and key in “192.168.1.1”, then press OK

When the SETUP page pops up, choose “Automatic Configuration—DHCP” as the Connection Type. Leave the Host Name and Domain Home as blank unless you know exactly what to enter. Click “Apply” then “Continue”.

At the STATUS page, you will be able to see “Connected” with the IP and DNS addresses assigned by your office or campus LAN. Otherwise, check the cables carefully before making the reconnection.



**STEP 4** - When this screen pops up, skip the User name, enter your Password (default as “admin”), then press OK

### Setting the Wireless AP Router with Fixed IP Address

If HGC get you a bunch of Fixed IP addresses such as the followings, then you’ll need to choose “Static IP” as the Connection Type at the SETUP page of the wireless AP Router.

IP Address : 218.102.202.162

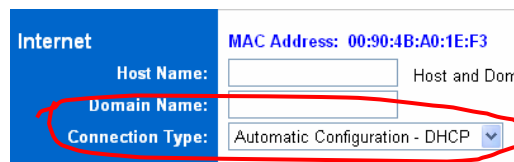
Subnet Mask : 255.255.255.255

Gateway : 203.218.20.254

DNS 1 : 205.252.144.126

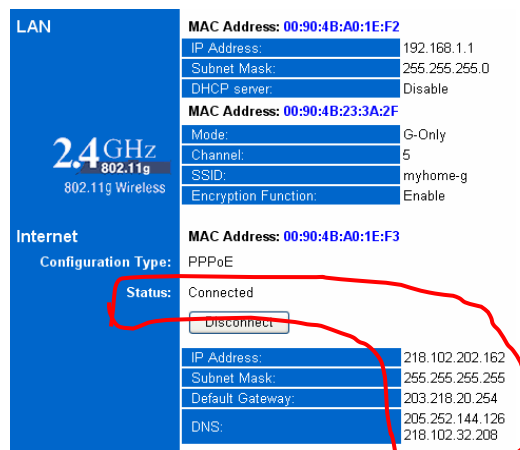
DNS 2 : 218.102.32.208

Please note that these are empirical IP addresses for the purpose of illustration only. Your own set of IP addresses should be different, representing the uniqueness of your HGC account. Plunge in these data carefully before clicking “Apply”.



**STEP 5** - For Dynamic IP only. Otherwise, go to step 7 for Static IP Configuration, Now, choose “Automatic Configuration—DHCP” as the Connection Type, then click “Apply”

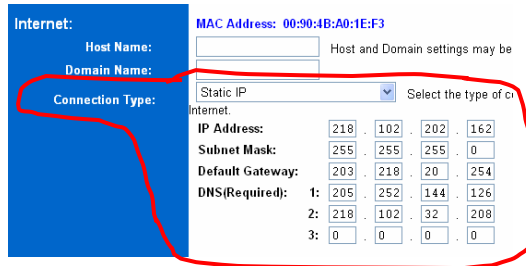
*For Dynamic IP Configuration, choose “Automatic Configuration—DHCP” as the Connection Type. Leave the Host Name and Domain Home as blank unless you know exactly what to enter.*



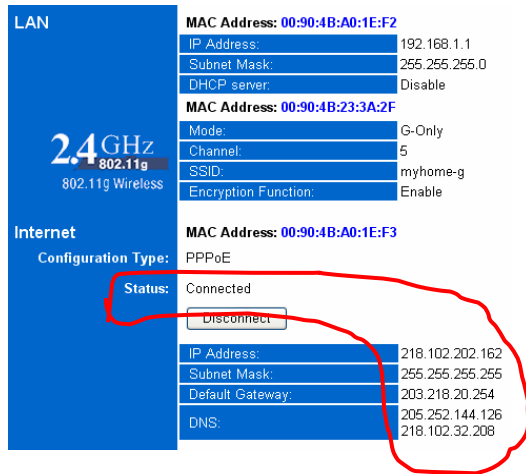
**STEP 6** - The “Status” screen refreshes every six seconds. It shows a bunch of IP and DNS addresses if the AP router is connected to your office or campus LAN

At the STATUS page, you will be able to

see “Connected” with your IP and DNS addresses. Otherwise, check the cables and the IP addresses carefully before making the reconnection. **d**



**STEP 7** - For “Static IP” configuration only. Now, key in the IP, Subnet Mask, Gateway and DNS addresses supplied by your office network administrator, then click “Apply”



**STEP 8** - The “Status” screen refreshes every six seconds. It shows a bunch of IP and DNS addresses if the AP router is connected to your office or campus LAN

*If HGC get you a bunch of Fixed IP addresses such as the followings, then you’ll need to choose “Static IP” as the Connection Type at the SETUP page of the wireless AP Router.*

# danets

*S.Y. Wong CEng MIEE*

---

DataCom Network Ltd.  
1505 Ricky Centre  
Kwun Tong  
Hong Kong

Phone: +852 2951 0321  
Fax: +852 3141 9209  
Email: marcom@danets.com



---

We are on the web!

Please visit [www.danets.com](http://www.danets.com)

---

In today's environment, it's all about getting back to the basics. We focus on our core competence to improve the fundamentals of personal mobile communications - unwiring the mobile terminals using "Carrier Class" technologies with fun and productivity.

We differentiate our products and services with competitive quality and price performance, plus a deep understanding of the RF (wireless) and networking technologies in our planning and installation service offerings. How do we do that? We work directly with the manufacturers to obviate gaps in our supply chain, gain the economy of scale so that we can get you the cost benefits and the after-sales services.

For further information, please call +852 2951 0321 or email: [marcom@danets.com](mailto:marcom@danets.com)

The registered trademarks belong to the respective companies.

Specifications are subject to change without notice.

---

## HGC Wireless Broadband Setup Quick Reference



### Special points of interest

- Showing you the physical cable connection of the wireless AP Router and HGC ADSL/VDSL Modem.
- Setting the wireless AP Router for either the "Automatic Configuration—DHCP" or "Static IP" according to your HGC subscription.
- Verifying the broadband connection.

