



S.Y. Wong CEng MIEE



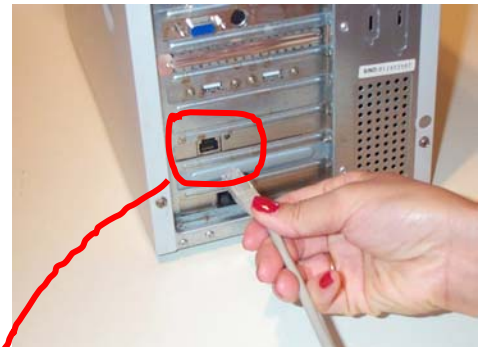
DN-WLAN-010
August 2003

Pacific Supernet Wireless Broadband Setup Quick Reference

Special points of interest

- Showing you the physical cable connections of the ADSL Modem and the wireless AP Router.
- Setting the wireless AP Router using PPPoE for Dynamic IP configuration.
- Verifying the broadband connection.

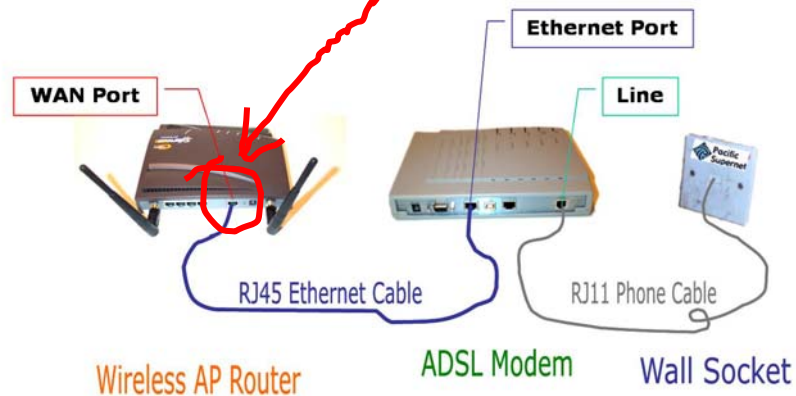
You may be supplied with the ADSL Modem of NEC, Aresoom, Cisco, ECI or Alcatel. But no matter brand you are using, the should be able to locate the Ethernet Port that goes to your PC and a Line Port that terminates at your wall socket.



STEP 1 - Unplug the RJ45 Ethernet Cable that runs from the Pacific Supernet's ADSL Modem

Connecting the ADSL Modem to the Wireless AP Router

First, remove the power supply of all de-



STEP 2 - Plug it straight into the WAN Port of the wireless AP Router. You don't have to remove any cables at the Pacific Supernet's ADSL Modem and the Wall Socket

VICES. Disconnect the RJ45 Ethernet cable from your PC and plug it straight into the WAN Port of the wireless AP Router. You don't have to remove any cables at the Pacific Supernet's ADSL Modem and the Wall Socket.

Power up the Modem and the AP Router.

Setting the Wireless AP Router using PPPoE for Dynamic IP Configuration

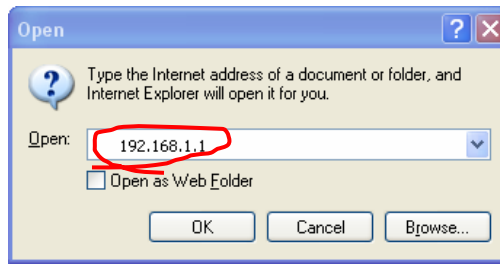
If you haven't set up your wireless PC client, we suggest you to work on it with installation guide of "Building your 11/54Mbps High-Speed Home/ Office

wireless network with a step-by-step approach" (Ref: DN-WLAN-02). You can find it at [Http://www.danets.com/ application_e.htm](http://www.danets.com/application_e.htm).

Once your wireless PC client is up and running, double click your web browser, press "Ctrl-L" together and key in the address 192.168.1.1, this is going to bring you to the "Login" of the Access Point Router. At default, skip the Username and key in "admin" at the Password box. If you have changed the Password previously, make sure that you key in your own. Hit "Enter" to get to the SETUP page.

When the SETUP page pops up, choose "PPPoE" as the Connection Type. The Username and Password boxes will appear just underneath the Connection Type. Enter your exact Username (e.g. Demo_id) and Password provided by Pacific Supernet. Click "Apply" then "Continue".

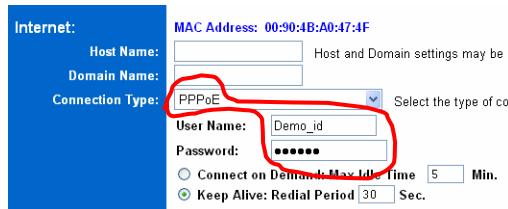
At the STATUS page, you will be able to see "Connected" with the IP and DNS addresses assigned by Pacific Supernet. Otherwise, check the cables, the power of the ADSL Modem, your Pacific Supernet login username and password carefully before making the reconnection. **d**



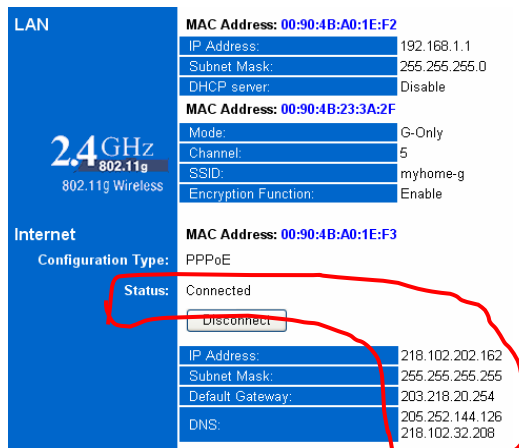
STEP 3 - To access the system administrator of the AP Router, open your Internet Explorer, press "Control-L" keys together and key in "192.168.1.1", then press OK



STEP 4 - When this screen pops up, skip the User name, enter your Password (default as "admin"), then press OK



STEP 5 - For ADSL modem connection, choose "PPPoE" as the Connection Type, enter your User Name and Password provided by Pacific Supernet



STEP 6 - The "Status" screen refreshes every six seconds. It shows a bunch of IP and DNS addresses if the AP router is connected to Pacific Supernet

When the SETUP page pops up, choose "PPPoE" as the Connection Type. The Username and Password boxes will appear just underneath the Connection Type. Enter your exact Username (e.g. Demo_id) and Password provided by Pacific Supernet.

danets

S.Y. Wong CEng MIEE

DataCom Network Ltd.
1505 Ricky Centre
Kwun Tong
Hong Kong

Phone: +852 2951 0321
Fax: +852 3141 9209
Email: marcom@danets.com



We are on the web!

Please visit www.danets.com

In today's environment, it's all about getting back to the basics. We focus on our core competence to improve the fundamentals of personal mobile communications - unwiring the mobile terminals using "Carrier-Class" technologies with fun and productivity.

We differentiate our products and services with competitive quality and price performance, plus a deep understanding of the RF (wireless) and networking technologies in our planning and installation service offerings. How do we do that? We work directly with the manufacturers to obviate gaps in our supply chain, gain the economy of scale so that we can get you the cost benefits and the after-sales services.

For further information, please call +852 2951 0321 or email: marcom@danets.com

The registered trademarks belong to the respective companies.

Specifications are subject to change without notice.

Pacific Supernet Wireless Broadband Setup Quick Reference



Special points of interest

- Showing you the physical cable connections of the ADSL Modem and the wireless AP Router.
- Setting the wireless AP Router using PPPoE for Dynamic IP configuration.
- Verifying the broadband connection.

